



LED ROUND OUTDOOR WALL CYLINDER

► **DESIGN** - LED ROUND OUTDOOR WALL CYLINDERS has a modern design with effective up or down illumination. This fixture has a tempered glass cover and a durable die-cast aluminum body. Some models are also have an additional decorative ring for elegance and beauty of the glow. It is designed to operate on 120V circuits and provides smooth triac dimming capabilities ranging from 10% to 100%.

► **VARIETY** - The fixture comes in round and square shapes in 8-inch and 12-inch with up or down installation option or both luminescence directions for different models.

► **COLOR SELECTABLE** - You can choose either a 3000K warm white, 4000K cool white or 5000K daylight color temperature.

► **APPLICATION** - The fixture is rated for Wet Locations, making it perfect for indoor and outdoor projects such as decks, front doors, porches, patios, corridors, walkways, or any other common areas.

► **ADVANTAGES** - With calculated lifespan with more than 50000 hours, these fixtures are made to last decades under normal operation! ASD provides a 5-year limited warranty along with UL certification to guarantee top quality products and safety!

► **OPTIONS:**

MODELS WITH PHOTOCELL - The built-in Dusk to Dawn Photocell will automatically turn the fixture on/off depending on the time of day.

BATTERY BACK-UP - The built-in battery back-up provide 90 minutes of power in case of emergency.



OLCLS (LCLS) ROUND



LCLR-EM ROUND WITH BATTERY BACK-UP



LCLR ROUND WITH DECORATIVE RING



OLCLS (LCLS) SQUARE



LCLS SQUARE WITH DECORATIVE RING

PRODUCT PRESENTATION:

Model	Light direction	Power	Voltage	Dimming	Lumens	CCT	Finish	Dimensions	Pre-installed	Certification
OLCLR (LCLR) ROUND										
ASD-LCLR-1A-9BK	1	9W	120V	TRIAC	1,002lm	3CCT (3,000/4,000/5,000K)	Black	4-3/8" x 6-7/16" x 7-7/8"	-	ETL (4001256)
ASD-OLCLR-1D9CC-BK-2PACK	1	9W	120V	TRIAC	1,002lm	3CCT (3,000/4,000/5,000K)	Black	4-3/8" x 6-7/16" x 7-7/8"	-	ETL (4001256)
ASD-OLCLR-2N1830-SS	2	18W	120V	-	1,500lm	3,000K	Stainless Steel	4-3/8" x 6-7/16" x 11-3/4"	-	ETL (4001256)
ASD-OLCLR-2N1850-SS	2	18W	120V	-	1,500lm	5,000K	Stainless Steel	4-3/8" x 6-7/16" x 11-3/4"	-	ETL (4001256)
ASD-LCLR-2A-18BK	2	18W	120V	TRIAC	1,859lm	3CCT (3,000/4,000/5,000K)	Black	4-3/8" x 6-7/16" x 11-13/16"	-	ETL (4001256)
OLCLR-PC (LCLR-PC) ROUND WITH PHOTOCELL										
ASD-LCLR-1A-9BK-PC	1	9W	120V	TRIAC	1,002lm	3CCT (3,000/4,000/5,000K)	Black	4-3/8" x 6-7/16" x 7-7/8"	Photocell	ETL (4001256)
ASD-OLCLR-1N9CC-PC-BK-2PACK	1	9W	120V	-	1,002lm	3CCT (3,000/4,000/5,000K)	Black	4-3/8" x 6-7/16" x 7-7/8"	Photocell	ETL (4001256)
ASD-OLCLR-2N18CC-PC-BZ	2	18W	120V	-	1,859lm	3CCT (3,000/4,000/5,000K)	Bronze	4-3/8" x 6-7/16" x 11-13/16"	Photocell	ETL (4001256)
ASD-LCLR-2A-18BK-PC	2	18W	120V	TRIAC	1,859lm	3CCT (3,000/4,000/5,000K)	Black	4-3/8" x 6-7/16" x 11-13/16"	Photocell	ETL (4001256)
ASD-OLCLR-2N18CC-PC-BK-2PACK	2	18W	120V	-	1,859lm	3CCT (3,000/4,000/5,000K)	Black	4-3/8" x 6-7/16" x 11-13/16"	Photocell	ETL (4001256)
LCLR-EM ROUND WITH BATTERY BACK-UP										
ASD-LCLR-MV-2A-18BK-EM	2	18W	120-277V	TRIAC	1,676lm	3CCT (3,000/4,000/5,000K)	Black	6-9/16" x 4-5/16" x 11-13/16"	6W Battery back-up	ETL (5032534)
LCLR ROUND WITH DECORATIVE RING										
ASD-LCLR-1B-9BK	1	9W	120-277V	TRIAC	579lm	3CCT (3,000/4,000/5,000K)	Black	4-3/8" x 6-9/16" x 7-15/16"	-	ETL (4001256)
ASD-LCLR-2B-18BK	2	18W	120-277V	TRIAC	1,180lm	3CCT (3,000/4,000/5,000K)	Black	4-3/8" x 6-9/16" x 11-13/16"	-	ETL (4001256)
OLCLS (LCLS) SQUARE										
ASD-OLCLS-1D9CC-BZ	1	9W	120V	TRIAC	983lm	3CCT (3,000/4,000/5,000K)	Bronze	4-3/8" x 5-13/16" x 7-7/8"	-	ETL (4001256)
ASD-LCLS-1A-9BK	1	9W	120-277V	TRIAC	819lm	3CCT (3,000/4,000/5,000K)	Black	4-3/8" x 5-13/16" x 7-7/8"	-	ETL (4001256)
ASD-LCLS-2A-18BK	2	18W	120-277 V	TRIAC	1,613lm	3CCT (3,000/4,000/5,000K)	Black	4-3/8" x 5-13/16" x 10-3/16"	-	ETL (4001256)
LCLS-PC SQUARE WITH PHOTOCELL										
ASD-LCLS-1A-9BK-PC	1	9W	120-277V	TRIAC	738lm	3CCT (3,000/4,000/5,000K)	Black	4-3/8" x 5-13/16" x 7-7/8"	Photocell	ETL (4001256)
ASD-LCLS-2A-18BK-PC	2	18W	120-277V	TRIAC	1,541lm	3CCT (3,000/4,000/5,000K)	Black	4-3/8" x 5-13/16" x 10-3/16"	Photocell	ETL (4001256)
LCLS SQUARE WITH DECORATIVE RING										
ASD-LCLS-1B-9BK	1	9W	120-277V	TRIAC	502lm	3CCT (3,000/4,000/5,000K)	Black	4-3/8" x 5-13/16" x 7-15/16"	-	ETL (4001256)
ASD-LCLS-2B-18BK	2	18W	120-277V	TRIAC	962lm	3CCT (3,000/4,000/5,000K)	Black	4-3/8" x 5-13/16" x 11-13/16"	-	ETL (4001256)

For most up-to-date spec sheets please refer to asd-lighting.com



LED ROUND OUTDOOR WALL CYLINDER

TECHNICAL PARAMETERS:

Model	Work environment	Operating temperature	Power factor	Beam angle	Surge protection	Housing	Lens	CRI
OLCLR (LCLR) ROUND								
ASD-LCLR-1A-9BK	Wet locations	-40°F to 113°F (-40°C to 45°C)	> 0.9	50°	1 kV	Aluminum	Glass	> 80
ASD-OLCLR-1D9CC-BK-2PACK	Wet locations	-40°F to 113°F (-40°C to 45°C)	> 0.9	50°	1 kV	Aluminum	Glass	> 80
ASD-OLCLR-2N1830-SS	Wet locations	-40°F to 113°F (-40°C to 45°C)	> 0.9	50°	1 kV	Aluminum	Glass	> 80
ASD-OLCLR-2N1850-SS	Wet locations	-40°F to 113°F (-40°C to 45°C)	> 0.9	50°	1 kV	Aluminum	Glass	> 80
ASD-LCLR-2A-18BK	Wet locations	-40°F to 113°F (-40°C to 45°C)	> 0.9	50°	1 kV	Aluminum	Glass	> 80
OLCLR-PC (LCLR-PC) ROUND WITH PHOTOCELL								
ASD-LCLR-1A-9BK-PC	Wet locations	-4°F to 113°F (-20°C to 45°C)	> 0.9	50°	1 kV	Aluminum	Glass	> 80
ASD-OLCLR-1N9CC-PC-BK-2PACK	Wet locations	-4°F to 113°F (-20°C to 45°C)	> 0.9	50°	1 kV	Aluminum	Glass	> 80
ASD-OLCLR-2N18CC-PC-BZ	Wet locations	-4°F to 113°F (-20°C to 45°C)	> 0.9	50°	1 kV	Aluminum	Glass	> 80
ASD-LCLR-2A-18BK-PC	Wet locations	-4°F to 122°F (-20°C to 50°C)	> 0.9	50°	1 kV	Aluminum	Glass	> 80
ASD-OLCLR-2N18CC-PC-BK-2PACK	Wet locations	-4°F to 113°F (-20°C to 45°C)	> 0.9	50°	1 kV	Aluminum	Glass	> 80
LCLR-EM ROUND WITH BATTERY BACK-UP								
ASD-LCLR-MV-2A-18BK-EM	Wet locations	-4°F to 113°F (-20°C to 45°C)	> 0.9	306°	2 kV	Aluminum	Glass	> 80
LCLR ROUND WITH DECORATIVE RING								
ASD-LCLR-1B-9BK	Wet locations	-40°F to 113°F (-40°C to 45°C)	> 0.9	61°	2 kV	Aluminum	Glass	> 80
ASD-LCLR-2B-18BK	Wet locations	-40°F to 113°F (-40°C to 45°C)	> 0.9	360°	2 kV	Aluminum	Glass	> 80
OLCLS (LCLS) SQUARE								
ASD-OLCLS-1D9CC-BZ	Wet locations	-40°F to 113°F (-40°C to 45°C)	> 0.9	50°	1 kV	Aluminum	Glass	> 80
ASD-LCLS-1A-9BK	Wet locations	-40°F to 113°F (-40°C to 45°C)	> 0.9	83°	2 kV	Aluminum	Glass	> 80
ASD-LCLS-2A-18BK	Wet locations	-40°F to 113°F (-40°C to 45°C)	> 0.9	360°	2 kV	Aluminum	Glass	> 80
LCLS-PC SQUARE WITH PHOTOCELL								
ASD-LCLS-1A-9BK-PC	Wet locations	-4°F to 113°F (-20°C to 45°C)	> 0.9	83°	2 kV	Aluminum	Glass	> 80
ASD-LCLS-2A-18BK-PC	Wet locations	-4°F to 113°F (-20°C to 45°C)	> 0.9	360°	2 kV	Aluminum	Glass	> 80
LCLS SQUARE WITH DECORATIVE RING								
ASD-LCLS-1B-9BK	Wet locations	-40°F to 113°F (-40°C to 45°C)	> 0.9	56°	2 kV	Aluminum	Glass	> 80
ASD-LCLS-2B-18BK	Wet locations	-40°F to 113°F (-40°C to 45°C)	> 0.9	360°	2 kV	Aluminum	Glass	> 80

DIMMING COMPATIBLE CONTROLS:

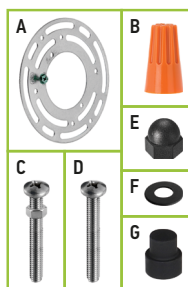
Brand	Lutron		Leviton
Models	MACL-153MLH-WH	DVCL-153PR	R02-DW6HD-2RW
	STCL-153PH-WH	P-PKG1W	R00-RNL06-0TW
	PD-6WCL-WH-R		R68-06674-PDT
			DSL06

BUG RATING:

Model	BUG rating
ASD-LCLR-1A-9BK	B1-U0-G0

PACKAGE CONTENTS:

Description	Quantity
LED Round or Square Outdoor Wall Cylinder	1 (2 for 2 pack)
Mounting plate (A)	1
Wire nut (B)	3
Mounting screw (C)	2
Outlet box screw (D)	2
Decorative nut (E)	2
Waterproof gasket (F)	2
Photocell cap (G) only for PC models	1
Box	1



BUILT-IN PHOTOCELL INFORMATION

Specifications	
Input power	120 Vac, 60 Hz
Light level to turn ON	30 ~ 150 lux (2.8 - 14 fc)
Light level to turn OFF	200 ~ 800 lux (18.6-74.4 fc)
Operating temperature	-4°F to 122°F (-20°C to 50°C)

The dusk-to-dawn sensor automatically turns the fixture off during daylight hours.

For most up-to-date spec sheets please refer to asd-lighting.com



LED ROUND OUTDOOR WALL CYLINDER

INSTALLATION GUIDE

IMPORTANT SAFETY INFORMATION:

Please read all the instructions below before installation!

- ▶ Make sure that the supply voltage corresponds to the rated product voltage.
- ▶ The product must be installed by a qualified electrician in accordance with the National Electrical Code and corresponding local codes.
- ▶ If the product is damaged, do not use it.

⚠ WARNING

Risk of personal injury – read and follow all warnings and installation instructions. Keep or give to the owner for future reference.



Risk of cuts: Wear gloves to prevent cuts or abrasions when removing from carton, handling, installing, and maintaining this product.

Risk of electric shock: This product must be installed in accordance with the applicable installation code by a person familiar with the construction and operation of the product and the hazards involved.

Risk of Fire: Minimum 194°F supply conductors. Consult a qualified electrician to ensure correct branch circuit conductor.

ASD® assumes no responsibility for claims arising out of improper or careless installation or handling of this product.

BUILT-IN BACK-UP BATTERY INFORMATION

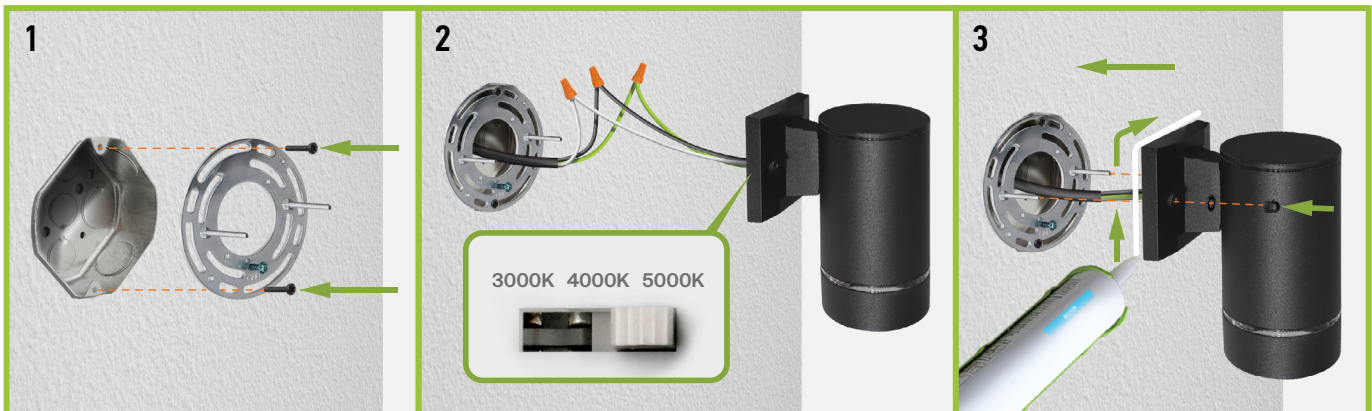
Button	Remarks
 Blinking	Operating condition
 OFF	Emergency mode Test switch

1. Indicator Light is Blinking: Battery back-up recharging.
2. Indicator Light is OFF: Battery back-up is full charge; Battery back-up is working.
3. In order to test the battery back-up press the test switch one time. To turn off the emergency power state press test switch one more time.

Specifications	
Input voltage	100-277 V 50/60 Hz
AC Input current	max 110 mA
AC Input power rating	max 5.0W
Output current and voltage	200 mA 20-36 Vdc
Output power	6W
Lumens	400 lm
Emergency time	min 90 minutes
Indicator light	Illuminated test switch
Battery	Li-ion battery - 11.1 V/2200 mAh
Battery charging current	440 mA
Charging time	8 hours
Temperature rating (ambient)	32°F to 113°F (0°C to 45°C)

INSTALLATION STEPS:

1. Screw the two mounting screws onto the mounting plate. Attach the mounting plate to the outlet box using screws. Make sure the threads of the mounting screws are facing outside when the mounting plate is attached to the outlet box. In models with photocell option remove the photocell cap to make the dusk-to-dawn sensor operate.
2. Choose needed color temperature by adjusting switch position. Connect the wires: Black to Black, White to White, Ground to Ground. Secure the connection with wire nuts. Place the fixture base on the wall by aligning the protruding mounting screws through the holes on the wall plate. Put the waterproof gasket on each mounting screw. Tighten the fixture to the wall using two decorative nuts.
3. For outdoor locations please use silicone (not included) shown in the picture below.



* The fixture must be mounted vertically with the photocell sensor facing up.

For most up-to-date spec sheets please refer to asd-lighting.com



LED ROUND OUTDOOR WALL CYLINDER

ORDERING INFORMATION

Model	Product dimensions	Weight	Pcs. (pack) per carton	Carton size	Carton weight	UPC	GTIN 14
OLCLR (LCLR) ROUND							
ASD-LCLR-1A-9BK	4-3/8" x 6-7/16" x 7-7/8"	0.9 lbs (0.4 kg)	2	11.4" x 7.9" x 9.7"	2 lbs	81012811738	10810128117385
ASD-OLCLR-1D9CC-BK-2PACK	4-3/8" x 6-7/16" x 7-7/8"	4 lbs (1.8 kg)	6 (2)	24.4" x 11.4" x 9.8"	16.9 lbs	81012811248	10810128112489
ASD-OLCLR-2N1830-SS	4-3/8" x 6-7/16" x 11-3/4"	3.1 lbs (1.4 kg)	6	24.3" x 14.3" x 12"	23.6 lbs	81005073141	20810050731410
ASD-OLCLR-2N1850-SS	4-3/8" x 6-7/16" x 11-3/4"	3.1 lbs (1.4 kg)	6	23.8" x 14.3" x 12"	22 lbs	81005073143	20810050731434
ASD-LCLR-2A-18BK	4-3/8" x 6-7/16" x 11-13/16"	2.5 lbs (1.2 kg)	2	11.4" x 7.9" x 13.6"	6.8 lbs	81012811739	10810128117392
OLCLR-PC (LCLR-PC) ROUND WITH PHOTOCELL							
ASD-LCLR-1A-9BK-PC	4-3/8" x 6-7/16" x 7-7/8"	0.9 lbs (0.4 kg)	2	11.4" x 7.9" x 9.7"	2 lbs	81012811635	10810128116357
ASD-OLCLR-1N9CC-PC-BK-2PACK	4-3/8" x 6-7/16" x 7-7/8"	6.2 lbs (2.8 kg)	6 (2)	24.4" x 11.4" x 9.8"	20.5 lbs	81012811162	10810128111628
ASD-OLCLR-2N18CC-PC-BZ	4-3/8" x 6-7/16" x 11-13/16"	2.5 lbs (1.1 kg)	6	16.7" x 15.4" x 13.6"	19.7 lbs	81005073803	10810050738030
ASD-LCLR-2A-18BK-PC	4-3/8" x 6-7/16" x 11-13/16"	2.5 lbs (1.2 kg)	2	11.4" x 7.9" x 13.6"	6.8 lbs	81012811741	10810128117415
ASD-OLCLR-2N18CC-PC-BK-2PACK	4-3/8" x 6-7/16" x 11-13/16"	5.3 lbs (2.4 kg)	6 (2)	24.4" x 11.4" x 13.8"	20.3 lbs	81012811388	10810128113882
LCLR-EM ROUND WITH BATTERY BACK-UP							
ASD-LCLR-MV-2A-18BK-EM	6-9/16" x 4-5/16" x 11-13/16"	2.6 lbs (1.2 kg)	6	16.7" x 15.8" x 13.8"	22.3 lbs	81019020041	10810190200411
LCLR ROUND WITH DECORATIVE RING							
ASD-LCLR-1B-9BK	4-3/8" x 6-9/16" x 7-15/16"	2 lbs (0.9 kg)	2	12.2" x 8.3" x 10.4"	5.5 lbs	81012811820	10810128118207
ASD-LCLR-2B-18BK	4-3/8" x 6-9/16" x 11-13/16"	2.7 lbs (1.2 kg)	2	12.2" x 8.3" x 14.4"	7.4 lbs	81012811818	10810128118184
OLCLS (LCLS) SQUARE							
ASD-OLCLS-1D9CC-BZ	4-3/8" x 5-13/16" x 7-7/8"	2 lbs (0.9 kg)	6	16.7" x 15.4" x 9.8"	15.3 lbs	81005073650	30810050736504
ASD-LCLS-1A-9BK	4-3/8" x 5-13/16" x 7-7/8"	2.2 lbs (1 kg)	6	16.7" x 14.8" x 9.8"	19.4 lbs	81012811813	10810128118139
ASD-LCLS-2A-18BK	4-3/8" x 5-13/16" x 10-3/16"	2.9 lbs (1.3 kg)	6	16.7" x 14.8" x 12.2"	21.3 lbs	81012811814	10810128118146
LCLS-PC SQUARE WITH PHOTOCELL							
ASD-LCLS-1A-9BK-PC	4-3/8" x 5-13/16" x 7-7/8"	2.2 lbs (1 kg)	6	16.7" x 14.8" x 9.8"	19.4 lbs	81012811815	10810128118153
ASD-LCLS-2A-18BK-PC	4-3/8" x 5-13/16" x 10-3/16"	2.9 lbs (1.3 kg)	6	16.7" x 14.8" x 12.2"	21.3 lbs	81012811816	10810128118160
LCLR SQUARE WITH DECORATIVE RING							
ASD-LCLS-1B-9BK	4-3/8" x 5-13/16" x 7-15/16"	2.1 lbs (1 kg)	2	11.4" x 7.7" x 9.8"	5.8 lbs	81012811819	10810128118191
ASD-LCLS-2B-18BK	4-3/8" x 5-13/16" x 11-13/16"	3 lbs (1.4 kg)	2	11.4" x 7.7" x 14"	8.2 lbs	81012811817	10810128118177

For most up-to-date spec sheets please refer to asd-lighting.com