



# LED LINEAR NARROW HIGH BAY WITH Q-BASE

## ST series

► **DESIGN** - LED LINEAR NARROW HIGH BAY WITH Q-BASE STANDARD SERIES delivers high efficiency at 170 lm/W in a sleek, narrow-profile design-ideal for tight spaces or modern aesthetics. Featuring an integrated Q-base for microwave or PIR sensors, die-cast aluminum housing for optimal heat dissipation, and an anti-glare PC lens for visual comfort. Built for reliability with 6kV surge protection, 120–277V operation, and 0–10V dimming. Offers adjustable power and selectable color to suit varied lighting needs.

► **NARROW SHAPE** - Fixture is ideal for demanding or space-constrained environments, offering powerful illumination without compromising ceiling space

► **MODELS WITH BATTERY BACK-UP** - This fixture is equipped with a powerful built-in 40W battery back-up, ensuring reliable operation for up to 90 minutes during emergencies. Designed to provide uninterrupted lighting when you need it most.

► **APPLICATION** - Perfect commercial or industrial solution for warehouses, supermarkets, retail stores, gyms, and many other applications. This fixture has IK10 level impact protection and is also Damp Locations rated.

► **ADVANTAGES** - With calculated lifespan up to 167 000 hours, these fixtures are made to last decades under normal operation! ASD provides a 5-year limited warranty along with UL and DLC Premium certifications to guarantee top quality products and safety!



## PRODUCT PRESENTATION:

Model	Power	Sensor base	Voltage	Dimming	Lumens	CCT	Finish	Dimensions	Pre-installed	Certification
<b>NHB-ST 120-277V</b>										
ASD-NHB-ST-160	100/130/160 W	3-pin	120-277V	0-10V	26,100lm	3500/4000/5000 K	White	29-15/16" x 4-11/16" x 3-5/16"	-	UL(E473804),DLC Premium
ASD-NHB-ST-220	130/160/220 W	3-pin	120-277V	0-10V	34,331lm	3500/4000/5000 K	White	30" x 7-5/8" x 3-3/8"	-	UL(E473804),DLC Premium
ASD-NHB-ST-320	160/220/320 W	3-pin	120-277V	0-10V	51,952lm	3500/4000/5000 K	White	30" x 7-5/8" x 3-3/8"	-	UL(E473804),DLC Premium
<b>NHB-ST 120-277V WITH BATTERY BACK-UP</b>										
ASD-NHB-ST-220-40EM	130/160/220 W	3-pin	120-277V	0-10V	34,331lm	3500/4000/5000 K	White	32-13/16" x 7-5/8" x 5-11/16"	Battery Back-up	UL(E473804),DLC Premium
<b>SENSORS AND REMOTE</b>										
ASD-S10IR-WH	Side Infrared motion sensor 3pin							3-3/4" x 2-3/8" x 2-1/2"	-	UL (E541103)
ASD-RC100LCD	Remote control for motion sensor							5-13/16" x 2-3/4" x 1"	-	-

For detailed luminous flux information please refer to Annex 1, page 2.

## ORDERING INFORMATION

Model	Product dimensions	Weight	Pcs. per carton	Carton size	Carton weight	UPC
<b>NHB-ST 120-277V</b>						
ASD-NHB-ST-160	29-15/16" x 4-11/16" x 3-5/16"	6.7 lbs(3.0kg)	1	30.94" x 5.51" x 4.09"	7.5 lbs	81019020048
ASD-NHB-ST-220	30" x 7-5/8" x 3-3/8"	8.7 lbs(3.9kg)	1	30.94" x 8.46" x 4.17"	9.7 lbs	81019020049
ASD-NHB-ST-320	30" x 7-5/8" x 3-3/8"	9.3 lbs(4.2 kg)	1	30.94" x 8.46" x 4.17"	10.3 lbs	81019020050
<b>NHB-ST 120-277V WITH BATTERY BACK-UP</b>						
ASD-NHB-ST-220-40EM	32-13/16" x 7-5/8" x 5-11/16"	11.5 lbs(5.2kg)	1	33.70" x 8.54" x 6.69"	14.2 lbs	81019020051

For most up-to-date spec sheets please refer to [asd-lighting.com](http://asd-lighting.com)



# LED LINEAR NARROW HIGH BAY WITH Q-BASE

## ST series

### TECHNICAL PARAMETERS:

Model	Max input current	Inrush current	Work environment	Operating temperature	Power factor	Beam Angle	Surge protection	Housing	Lens	CRI
<b>NHB-ST 120-277V</b>										
ASD-NHB-ST-160	1.62A	80A	Damp location	-40°F to 122°F (-40°C to 50°C)	>0,9	90°	6kV	Aluminum	PC	>80
ASD-NHB-ST-220	2.24A	90A	Damp location	-40°F to 122°F (-40°C to 50°C)	>0,9	90°	6kV	Aluminum	PC	>80
ASD-NHB-ST-320	2.24A	90A	Damp location	-40°F to 122°F (-40°C to 50°C)	>0,9	90°	6kV	Aluminum	PC	>80
<b>NHB-ST 120-277V WITH BATTERY BACK-UP</b>										
ASD-NHB-ST-220-40EM	2.24A	90A	Damp location	-40°F to 122°F (-40°C to 50°C)	>0,9	90°	6kV	Aluminum	PC	>80

### DIMMING COMPATIBLE CONTROLS:

Brand	Lutron	Leviton	Legrand
Models	DVSTV DVTV-WH	DS710 IP710	H4FBL3PW

### PACKAGE CONTENTS:



Description	Quantity
LED Linear Narrow High Bay with Q-base	1
Hanging kit: V hook, chain 3.2 ft (A)	1
Box	1



## ANNEX 1

Model	Watts	3,500 K	4,000 K	5,000 K
ASD-NHB-ST-160	100W	16,826 lm	17,656 lm	17,704 lm
	130W	21,121 lm	22,410 lm	22,057 lm
	160W	24,793 lm	26,705 lm	26,100 lm
ASD-NHB-ST-220	130W	20,858 lm	21,484 lm	21,745 lm
	160W	25,120 lm	26,177 lm	26,311 lm
	220W	33,336 lm	35,027 lm	34,331 lm
ASD-NHB-ST-320	160W	28,506 lm	29,431 lm	29,385 lm
	220W	37,937 lm	39,038 lm	38,144 lm
	320W	51,349 lm	53,308 lm	51,952 lm
ASD-NHB-ST-220-40EM	130W	20,858 lm	21,484 lm	21,745 lm
	160W	25,120 lm	26,177 lm	26,311 lm
	220W	33,336 lm	35,027 lm	34,331 lm

### ACCESSORIES (sold separately):

<b>Infrared motion sensor 3pin</b> ASD-S10IR-WH 	<b>Remote control for motion sensor</b> ASD-RC100LCD 
---	--

### ACCESSORY COMPATIBILITY LIST:

Models	Accessories	Infrared motion sensor 3pin ASD-S10IR-WH	Remote control for motion sensor ASD-RC100LCD
		ASD-NHB-ST	160W 220W 320W
ASD-NHB-ST-EM	220W	•	•

For most up-to-date spec sheets please refer to [asd-lighting.com](http://asd-lighting.com)



# LED LINEAR NARROW HIGH BAY WITH Q-BASE

ST series

## MOTION SENSOR INFORMATION

### SENSOR USAGE RECOMMENDATIONS:

INDOOR RECOMMENDED LOCATIONS
Places where the temperature of the environment is well controlled.
Places where detecting the movement of people is a high priority.

INDOOR NOT RECOMMENDED LOCATIONS
Places where environment temp close to human body.
Places where PIR sensor lens can get covered.
Places higher than 39ft (unless you use 50ft PIR).

Specifications		Default setting
Detection area	25 %/50 %/75 %/100 %	100 %
Hold time	5 s/30 s/1 min/3 min/5 min/10 min/20 min/30 min	10 min
Daylight threshold	2 lux (0.2 fc)/10 lux (0.9 fc)/30 lux (2.8 fc)/50 lux (4.7 fc)/80 lux (7.4 fc)/120 lux (11.2 fc)/200 lux (18.6 fc)/250 lux (23.2 fc)/300 lux (27.9 fc)/350 lux (32.5 fc)/400 lux (37.2 fc)/disable	Disable
Stand by period	0 s/10 s/30 s/1 min/5 min/10 min/30 min/60 min/+ ∞	0 s
Stand by dimming level	10 %/20 %/30 %/50 %	10 %

Specifications	
Operating voltage	10 - 15 V
Operating current	< 30 mA
Mounting height	max 39.4 ft (12 m)
Detection radius	14.7 ft - 26.2 ft (4.5 m - 8 m)

### REMOTE CONTROL **ASD-RC100LCD** sold separately



Button	Remarks	Button	Remarks	Button	Remarks
<b>ON/OFF</b>	ON/OFF Turn the sensor ON/OFF.	<b>Auto</b>	Auto Enter "sensor mode" and perform previous settings.	<b>Reset</b>	Reset Go back to default program; Enter into "sensor mode" and perform the default program.
<b>Scenes</b>	Scenes Shows current settings saved in remote.	<b>Start</b>	Start Press this to begin scene setup.	<b>Memory</b>	Memory Saves the scene settings.
<b>Apply</b>	Apply Applies current scene settings to the fixture.	<b>M H</b>	Mounting height Adjust detection area/sensitivity levels according to real installation situations, higher or lower.	<b>Send</b>	Send Memorize and send out the previous setting of individual parameters.
<b>Detection range</b>	Also known as "sensitivity", 100 % means the highest sensitivity and longest distance. Use this button and the + - buttons to adjust.	<b>Daylight sensor</b>	Daylight sensor The preset lux level at which motion will be detected. Use this button and the + - buttons to adjust.	<b>Stand-by dimming</b>	Stand-by dimming After hold time, the light will dim from 100 % to optional standby dimming levels. Use this button and the + - buttons to adjust.
<b>Hold time</b>	The period that light will stay illuminated 100 % after no motion is detected. Use this button and the + - buttons to adjust.	<b>Up</b>	Up The main functional buttons to adjust the factors to desired level. Press + - button to dim light directly auto in non-detection mode.	<b>Stand-by period</b>	Stand-by period The period after holdtime, during which the light keeps standby dimming level. Use this button and the + - buttons to adjust.
<b>K</b>	CCT selectable Not applicable to this product.	<b>Down</b>	Down	<b>Power</b>	Power Adjust brightness in both ON/OFF mode & sensor mode. minimum 10%, max 100%, each time this button is pressed it changes by 5%.
<b>Type</b>	Type Press this button to choose different remotes: ASD-RC-RC100, ASD-RC-RC200, ASD-06RC	<b>DH ON/OFF</b>	Daylight harvesting Daylight harvesting function enabled or disabled.	<b>Test button</b>	Test button Press this button to test the sensor; it will temporarily change the hold time to 2s. This setting cannot be saved.

For most up-to-date spec sheets please refer to [asd-lighting.com](http://asd-lighting.com)

ASD LIGHTING CORP

E-mail: [orders@asd-lighting.com](mailto:orders@asd-lighting.com) | Web site: [www.asd-lighting.com](http://www.asd-lighting.com)





# LED LINEAR NARROW HIGH BAY WITH Q-BASE

ST series

## INSTALLATION GUIDE

### IMPORTANT SAFETY INFORMATION:

Please read all the instructions below before installation!

- ▶ Make sure that the supply voltage corresponds to the rated product voltage.
- ▶ The product must be installed by a qualified electrician in accordance with the National Electrical Code and corresponding local codes.
- ▶ If the product is damaged, do not use it.

### ⚠ WARNING

**Risk of personal injury** – read and follow all warnings and installation instructions. Keep or give to the owner for future reference.

**Risk of cuts:** Wear gloves to prevent cuts or abrasions when removing from carton, handling, installing, and maintaining this product.

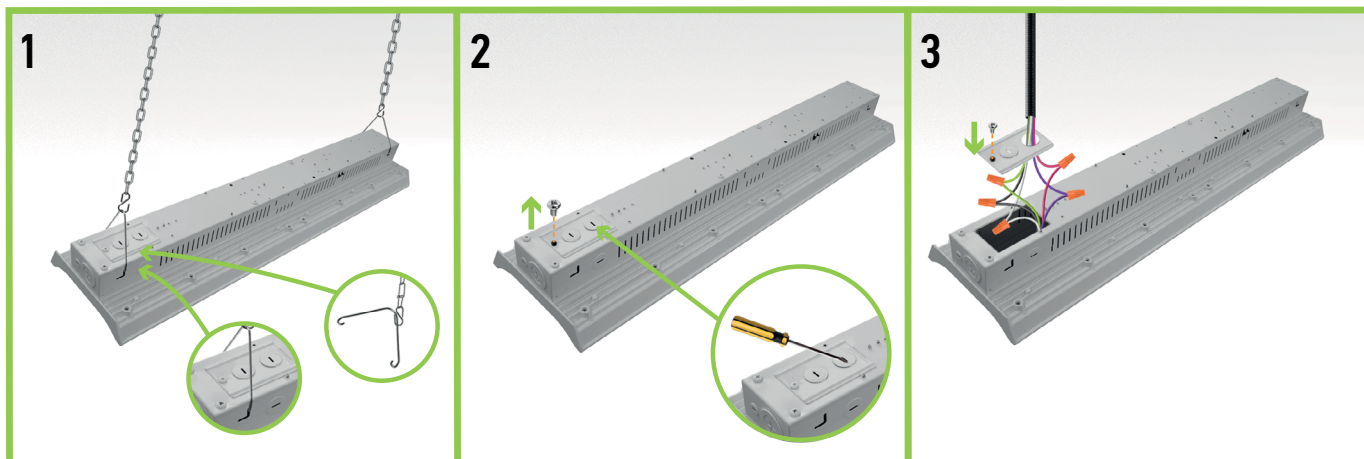
**Risk of electric shock:** This product must be installed in accordance with the applicable installation code by a person familiar with the construction and operation of the product and the hazards involved.

**Risk of Fire:** Minimum 194°F supply conductors. Consult a qualified electrician to ensure correct branch circuit conductor.

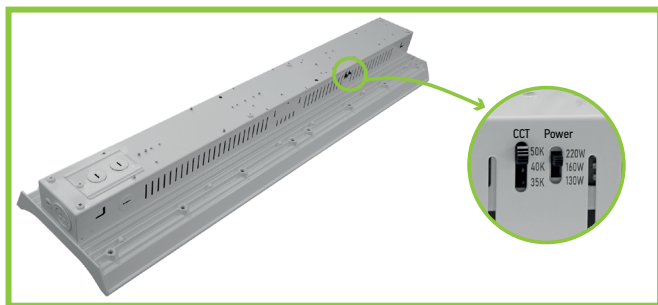
ASD® assumes no responsibility for claims arising out of improper or careless installation or handling of this product.

### INSTALLATION STEPS:

1. Insert V-hooks into both ends of the fixture. Secure chain to ceiling, beam or other mounting surface.
2. Unscrew and open backplate, use screwdriver to open one knockout.
3. Connect the wires: Black to Black, White to White, Green to Green. If you are not using the dimming wires cap them off but not together. Reattach knockout plate to top of the fixture and secure with screw.



### POWER AND COLOR TEMPERATURE SETTINGS:

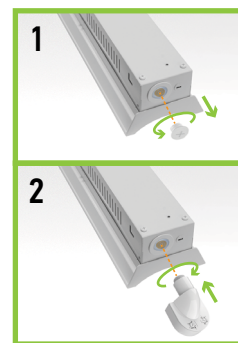


### MOTION SENSOR INSTALLATION:

ASD-S10IR-WH

**sold separately**

1. Unscrew the microwave sensor base cap.
2. Insert and twist the sensor until it is tight on the base surface.



For most up-to-date spec sheets please refer to [asd-lighting.com](http://asd-lighting.com)

