

# NPSU-60W/12

12V Constant Voltage Class 2 Dimmable Driver (Phase, 0-10V & PWM dimming)

Source: 110-277V Input / 12V Output  
60W

|             |
|-------------|
| Type        |
| Project     |
| Catalog No. |
| Notes       |

## PRODUCT DESCRIPTION

12V Constant Voltage Class 2 Dimmable LED driver to be used with Nora Lighting's 12 Volt systems. Compatible with Triac, ELV, MLV, 0-10V or PWM dimmers for a wide range of applications. Enclosure is rated for wet locations and cULus listed.

## FEATURES

- Constant Voltage
- Triac, ELV, MLV, 0-10V or PWM dimming
- Down to 1% dimming
- Stable operation, flicker-free dimming
- Meet Class 2 output limits
- 12VDC rated output
- Separate compartments for input and output wires
- cULus Listed

## ELECTRICAL

**Input Voltage:** 110-277V

**Output Voltage:** 12VDC

**Wattage:** 60W

**Power Factor:** 0.95

**Dimming:** Triac, ELV, MLV, 0-10V or PWM

**Protection:** Over-current, over-voltage and over-temperature protection

## COMPATIBLE NORA 24V SYSTEMS

LED Drivers are compatible with Nora Lighting's 12V systems

| SERIES                  | DESCRIPTION                    |
|-------------------------|--------------------------------|
| <a href="#">NMP-A</a>   | 12V Josh Adjustable Puck Light |
| <a href="#">NMP-LED</a> | 12V Josh Fixed Puck Light      |
| <a href="#">NM1-170</a> | 12V 1" M1 Series               |

## OPTIONAL ACCESSORIES

[NALTL-10](#): 10' Power Line Connector

[NALTL-30](#): 30' Power Line Connector

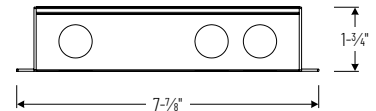
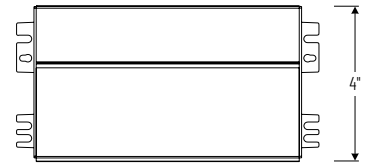
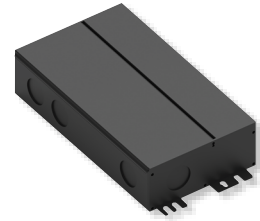
[NALTL-302W](#): Power Line Splitter, white cable. Splits power line connector into two separate connections.

## LABELS AND LISTINGS

- cULus Listed
- Suitable for dry, damp or wet locations
- RoHS & FCC compliant



## PRODUCT IMAGES & DIMENSIONS



## NPSU-60W/12

12V Class 2 Dimmable Driver (Phase, 0-10V & PWM dimming)



**NALTL-10 / NALTL-30**  
Power Line Connector



**NATL-302W**  
Power Line Splitter

## 12V Constant Voltage Class 2 Dimmable Driver (Phase, 0-10V & PWM dimming)

Output Voltage / Wattage

**NPSU-60W/12** = 12V Output / 60W

## Optional Accessories

Description

**NALTL-10** = 10' Power Line Connector

**NALTL-30** = 30' Power Line Connector

**NATL-302W** = Power Line Splitter, White

Example: **NPSU-60W/12** = 12V 60W Constant Voltage Class 2 Dimmable Driver (Phase, 0-10V & PWM dimming)