



LED ROUND CANLESS DOWNLIGHT GIMBAL

JBR-GB series

► **DESIGN** - LED ROUND CANLESS DOWNLIGHT GIMBAL features a 355° lens rotation and 90° tilt range, making it perfect for sloped ceilings and directional lighting. The model is air-tight to minimize ceiling air leakage and maintain building efficiency. It includes a J-box, plug-and-twist connector, and spring-loaded clips for quick installation. The acrylic lens with CRI90+ ensures even, high-quality light. Designed for 120V circuits with triac dimming.

► **VARIETY** - Available in 3-inch, 4-inch, and 6-inch round shapes, this fixture comes in White and Black finishes to complement any design preference.

► **COLOR SELECTABLE** - Choose between 2700K soft white, 3000K warm white, 3500K neutral white, 4000K cool white, or 5000K daylight to find the ideal color temperature for your space.

► **DIMMING** - Smooth triac dimming capabilities from 10% to 100% with modern LED dimmers gives you full control over your space.

► **INSTALLATION** - This fixture is IC rated so there is no can or any other housing required. It is also Wet location rated for added versatility.

► **ADVANTAGES** - With a lifespan of 54,000 hours, these fixtures are made to last decades under normal operation! ASD provides a 5-year limited warranty along with ETL, Energy Star and T24 certifications to guarantee top quality products and safety!



3 inch
White, Black



4 inch
White, Black



6 inch
White, Black

PRODUCT PRESENTATION:

Model	Size	Power	Voltage	Dimming	Lumens	CCT	Finish	Package type	Dimensions	Certification
ASD-JBR-GB-3D6WH-6P	3 inch	6 W	120V	Triac	541lm	2,700/3,000/3,500/4,000/5,000 K	White	6 pack	3-15/16" x 3-15/16" x 1-3/16"	ETL(5029309),ES,T24, JA8
ASD-JBR-GB-3D6BK-6P	3 inch	6 W	120V	Triac	541lm	2,700/3,000/3,500/4,000/5,000 K	Black	6 pack	3-15/16" x 3-15/16" x 1-3/16"	ETL(5029309),ES,T24, JA8
ASD-JBR-GB-4D9WH-6P	4 inch	9 W	120V	Triac	769lm	2,700/3,000/3,500/4,000/5,000 K	White	6 pack	4-13/16" x 4-13/16" x 1-1/2"	ETL(5029309),ES,T24, JA8
ASD-JBR-GB-4D9BK-6P	4 inch	9 W	120V	Triac	769lm	2,700/3,000/3,500/4,000/5,000 K	Black	6 pack	4-13/16" x 4-13/16" x 1-1/2"	ETL(5029309),ES,T24, JA8
ASD-JBR-GB-6D12WH-6P	6 inch	12 W	120V	Triac	1,216lm	2,700/3,000/3,500/4,000/5,000 K	White	6 pack	6-7/8" x 6-7/8" x 1-3/4"	ETL(5029309),ES,T24, JA8
ASD-JBR-GB-6D12BK-6P	6 inch	12 W	120V	Triac	1,216lm	2,700/3,000/3,500/4,000/5,000 K	Black	6 pack	6-7/8" x 6-7/8" x 1-3/4"	ETL(5029309),ES,T24, JA8

TECHNICAL PARAMETERS:

Model	Work environment	Operating temperature	Power factor	Beam Angle	Surge protection	Housing	Lens	CRI
ASD-JBR-GB-3D6WH-6P	Wet location	-4°F to 113°F(-20°C to 45°C)	>0,9	100°	2kV	Aluminum	PS	>90
ASD-JBR-GB-3D6BK-6P	Wet location	-4°F to 113°F(-20°C to 45°C)	>0,9	100°	2kV	Aluminum	PS	>90
ASD-JBR-GB-4D9WH-6P	Wet location	-4°F to 113°F(-20°C to 45°C)	>0,9	99°	2kV	Aluminum	PS	>90
ASD-JBR-GB-4D9BK-6P	Wet location	-4°F to 113°F(-20°C to 45°C)	>0,9	99°	2kV	Aluminum	PS	>90
ASD-JBR-GB-6D12WH-6P	Wet location	-4°F to 113°F(-20°C to 45°C)	>0,9	99°	2kV	Aluminum	PS	>90
ASD-JBR-GB-6D12BK-6P	Wet location	-4°F to 113°F(-20°C to 45°C)	>0,9	99°	2kV	Aluminum	PS	>90

For most up-to-date spec sheets please refer to asd-lighting.com



LED ROUND CANLESS DOWNLIGHT GIMBAL

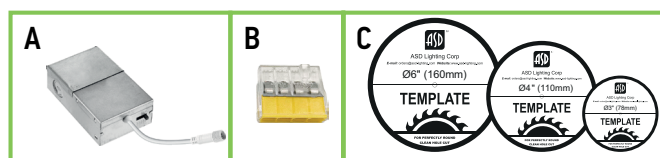
JBR-GB series

DIMMING COMPATIBLE CONTROLS:

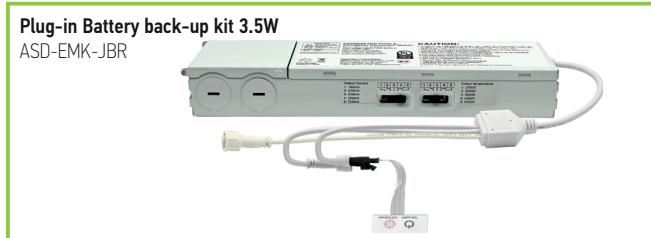
Brand	Lutron			Leviton
Models	CT-600PR	MSCL-OP153MH	DVWCL-153PH	R00-RNL06-TW
	TGCL-153PR	MA-RR	DVCL-153PR	R50-IPL06-10M
	SCL-153PR	P-PKG1W-WH-R	MACL-153MH	

PACKAGE CONTENTS:

Description	QUANTITY
LED Canless Downlight Gimbal Round	6
J-Box driver (A)	6
Connector (B)	18
Template for 3, 4, 6 inch (C)	1
Box	1



ACCESSORIES (sold separately):



Models	ASD-JBR-GB-3D6WH-6P	ASD-JBR-GB-3D6BK-6P	ASD-JBR-GB-4D9WH-6P	ASD-JBR-GB-4D9BK-6P	ASD-JBR-GB-6D12WH-6P	ASD-JBR-GB-6D12BK-6P
Accessories						
Plug-in battery back-up kit 3.5W ASD-EMK-JBR	•	•	•	•	•	•

PLUG-IN BATTERY BACK-UP KIT INFORMATION




ASD-EMK-JBR sold separately:

Size and power	Series	Cable	mA
3inch 6 W	JBR	FT1	160
4inch 9 W	JBRB		200
6inch 12 W	JBR, JBRB		280

Color temperature (CCT) selection and output current must be chosen according to the fixture type and the table supplied with the product.

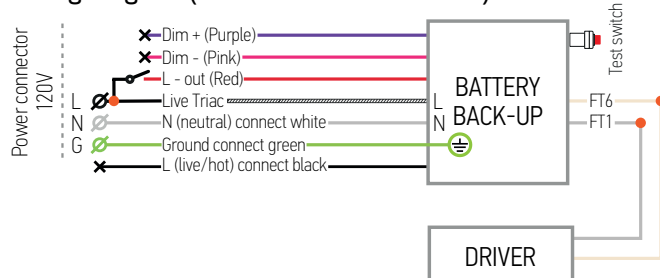
USAGE / OPERATION

Important: Please charge the battery for more than 24 hours on first use to activate all battery cells and ensure normal charge/discharge duration.

Button	Remarks
	Charging
	Discharging
	Fault

-Charging (AC power ON): Red indicator ON.
 -Discharging / Emergency Mode (AC power OFF): Red indicator OFF.
 -Emergency power failure: fixture does not operate when emergency supply fails.

Wiring diagram (120V AC Triac dimmable)



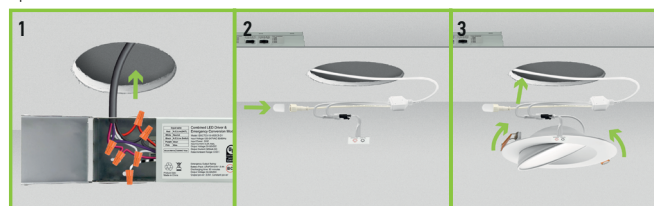
SWITCH TEST PROCEDURE:

- When the main power supply is connected and the unit is in normal mode, press the test button to switch to emergency mode.
- If the test button is not pressed, the unit remains in charging mode.
- In emergency mode, press and hold the test button for 3 seconds to exit emergency mode. Battery maintenance: charge-discharge at least once every three months to maintain battery life. Do not leave the battery idle or continuously charging for more than 6 months.

INSTALLATION PLUG-IN BATTERY BACK-UP KIT

ASD-EMK-JBR sold separately:

- Turn off power before installation and remove any existing fixtures. Open the emergency power supply cover, remove the required knockout on the side panel, install a suitable cable clamp (not included), feed the power cable through it, and connect the wires.
For Triac dimming: red to red, white to white, black & white to black & white. Cap the remaining wires.
- Insert the emergency power supply into the mounting hole and secure it. The hole must be larger than 3-1/8 inches or the unit will not fit. Connect the fixture power cable to the emergency power supply.
- Remove the adhesive backing from the indicator light and attach it to the fixture surface. Push the spring clips in to the mounting hole and insert the fixture; it will sit flush with the ceiling. Restore power and press the test switch to verify operation.



For most up-to-date spec sheets please refer to asd-lighting.com



LED ROUND CANLESS DOWNLIGHT GIMBAL

JBR-GB series

INSTALLATION GUIDE

IMPORTANT SAFETY INFORMATION:

Please read all the instructions below before installation!

- ▶ Make sure that the supply voltage corresponds to the rated product voltage.
- ▶ The product must be installed by a qualified electrician in accordance with the National Electrical Code and corresponding local codes.
- ▶ If the product is damaged, do not use it.

⚠ WARNING

Risk of personal injury – read and follow all warnings and installation instructions. Keep or give to the owner for future reference.

Risk of cuts: Wear gloves to prevent cuts or abrasions when removing from carton, handling, installing, and maintaining this product.

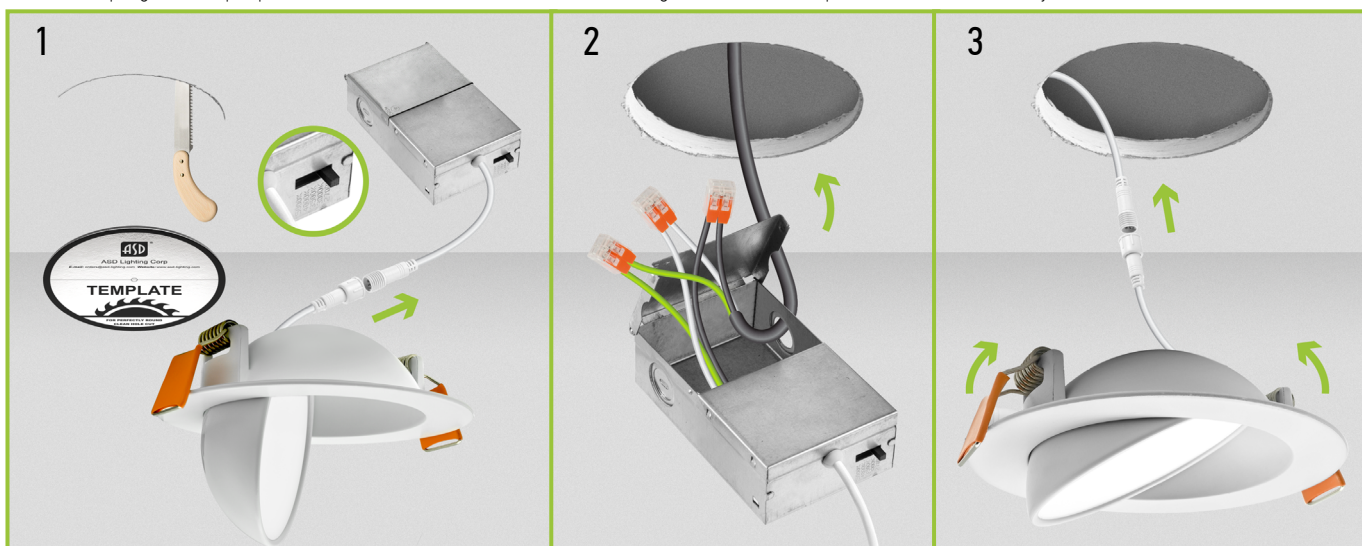
Risk of electric shock: This product must be installed in accordance with the applicable installation code by a person familiar with the construction and operation of the product and the hazards involved.

Risk of Fire: Minimum 194°F supply conductors. Consult a qualified electrician to ensure correct branch circuit conductor.

ASD® assumes no responsibility for claims arising out of improper or careless installation or handling of this product.

INSTALLATION STEPS:

1. Use template to cut an appropriate sized hole. Disconnect the fixture from the junction box. Choose needed color temperature by adjusting the switch. Close the junction box.
2. Open junction box. Connect the wires: Black to Black, White to White, Copper to Green. Secure the connection with quick connector.
3. Insert the junction box into the cut hole, leaving the connection cable outside. Connect the fixture to the Junction box inserting the cable and securing it with a cap. Push the spring loaded clips upwards and insert the fixture base in to the mounting hole. Release the clips, so the fixture fits securely.



* The fixture is suitable for ceiling thickness less than 0.5 inch.

ORDERING INFORMATION

Model	Product dimensions	Weight	Pcs. (pack) per carton	Carton size	Carton weight	UPC	GTIN 14
ASD-JBR-GB-3D6WH-6P	3-15/16" x 3-15/16" x 1-3/16"	3.3 lbs(1.5kg)	2	17.40" x 9.65" x 6.10"	8.6 lbs	81019020218	10810190202187
ASD-JBR-GB-3D6BK-6P	3-15/16" x 3-15/16" x 1-3/16"	3.3 lbs(1.5kg)	2	17.40" x 9.65" x 6.10"	8.6 lbs	81019020216	10810190202163
ASD-JBR-GB-4D9WH-6P	4-13/16" x 4-13/16" x 1-1/2"	4.0 lbs(1.8kg)	2	16.14" x 11.10" x 6.50"	10.3 lbs	81019020222	10810190202224
ASD-JBR-GB-4D9BK-6P	4-13/16" x 4-13/16" x 1-1/2"	4.0 lbs(1.8kg)	2	16.14" x 11.10" x 6.50"	10.3 lbs	81019020220	10810190202200
ASD-JBR-GB-6D12WH-6P	6-7/8" x 6-7/8" x 1-3/4"	5.8 lbs(2.6kg)	2	16.54" x 15.04" x 8.46"	14.2 lbs	81019020226	10810190202262
ASD-JBR-GB-6D12BK-6P	6-7/8" x 6-7/8" x 1-3/4"	5.8 lbs(2.6kg)	2	16.54" x 15.04" x 8.46"	14.2 lbs	81019020224	10810190202248

ACCESSORIES:

Model	Product dimensions	Pcs. per carton	Carton size	Carton weight	UPC	GTIN 14
ASD-EMK-JBR	9-15/16" x 2-13/16" x 1-3/8"	10	7.7" x 6.1" x 5.3"	1.8 lbs	810128110471	10810128110478

For most up-to-date spec sheets please refer to asd-lighting.com

ASD LIGHTING CORP

E-mail: orders@asd-lighting.com | Web site: www.asd-lighting.com

