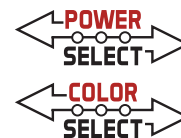




# XFIT



## KT-CLED150PS-L3-8CSB-VDIM-W

### GAS STATION CANOPY

#### DESCRIPTION

15" Gas Station Canopy | Power Select 150/125/100W  
 Color Select 3000/4000/5000K | Includes Threaded Pipe and Integrated Driver  
 120-277V Input | 80 CRI | 0-10V Dimming | White

#### APPLICATION

Gas station illumination needs, such as entranceways, pump islands, doorways, walkways, etc.



**5 YEAR**  
WARRANTY

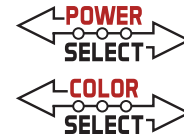
#### PRODUCT FEATURES

- Keystone Power Select technology (see **Performance Specifications** below)
- Keystone Color Select technology (3000/4000/5000K)
- Familiar, low-profile design ideal for a wide range of new and replacement installations
- Heavy-duty, die-cast aluminum housing with a modern aesthetic
- Surface mount installation with integrated driver. Junction box accessory optional, KT-CLED-JBOX-KIT-W (sold separately)
- Frosted glass diffuser with 110° optics
- Powered by Keystone LED 0–10V dimming driver; dimmable to 10%
- Ambient operating temperature: –40°C/–40°F to 50°C/122°F
- UL 1598 Certified, IP65 rated
- Power Factor: > 0.90
- THD: ≤ 20%
- L70 @ > 100,000 hrs @ 85°C/185°F ambient fixture temperature
- Meets FCC Part 15, Part B, Class A standards for conducted and radiated emissions

#### PERFORMANCE SPECIFICATIONS

Catalog Number	Selectable Wattage	Selectable CCT	Lumens	Efficacy	Input Voltage	CRI	Lifetime
KT-CLED150PS-L3-8CSB-VDIM-W	150W	3000K	21,330	142 lm/W	120–277V	> 80	50,000 hrs
		4000K	22,960	153 lm/W			
		5000K	22,330	149 lm/W			
	125W	3000K	18,460	148 lm/W			
		4000K	19,630	157 lm/W			
		5000K	19,200	154 lm/W			
	100W	3000K	15,530	155 lm/W			
		4000K	16,450	165 lm/W			
		5000K	16,360	164 lm/W			

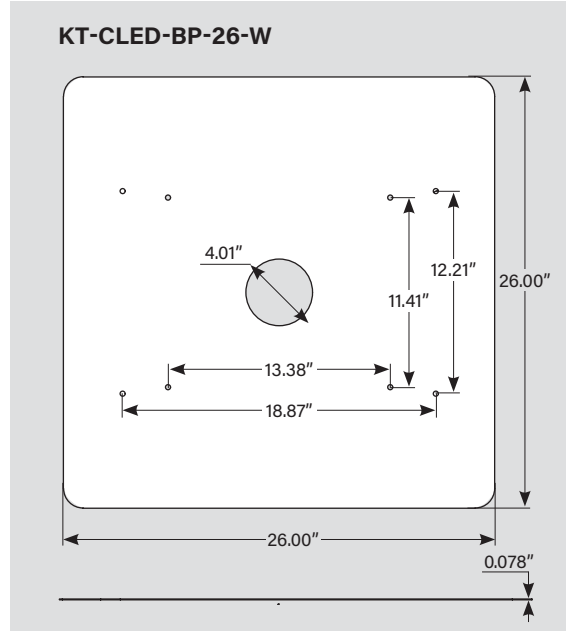
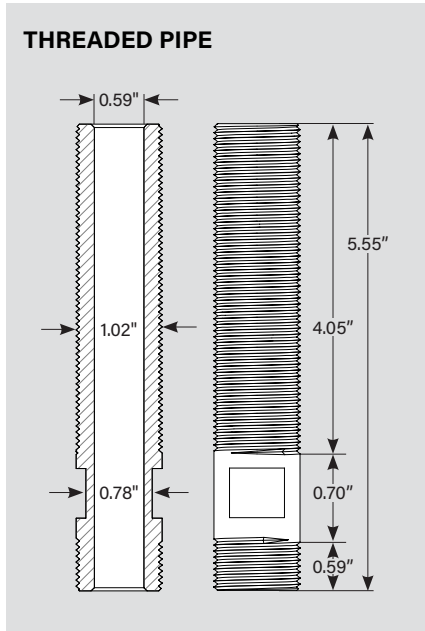
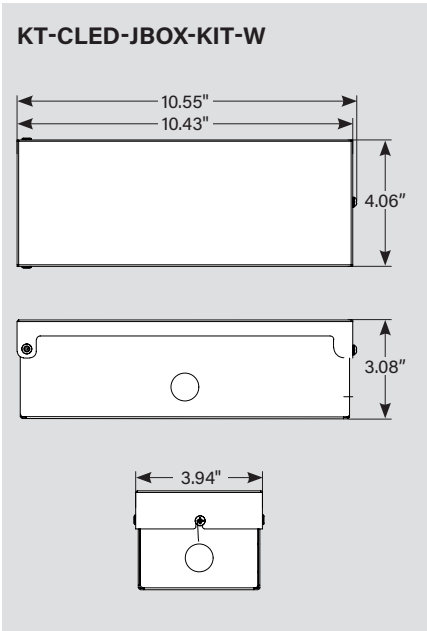
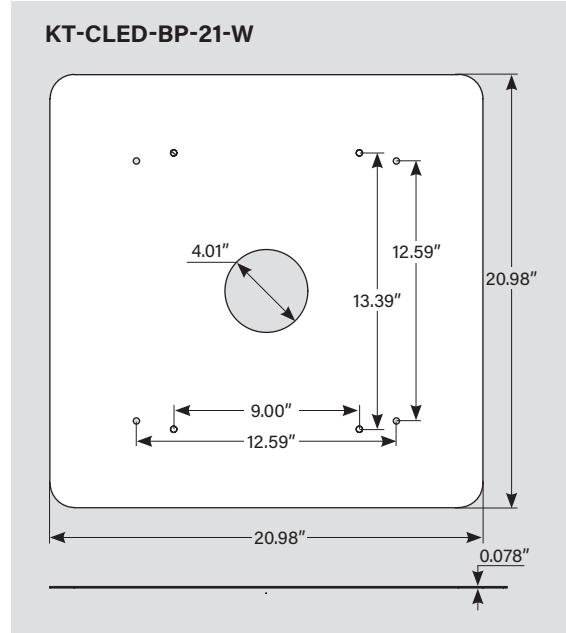
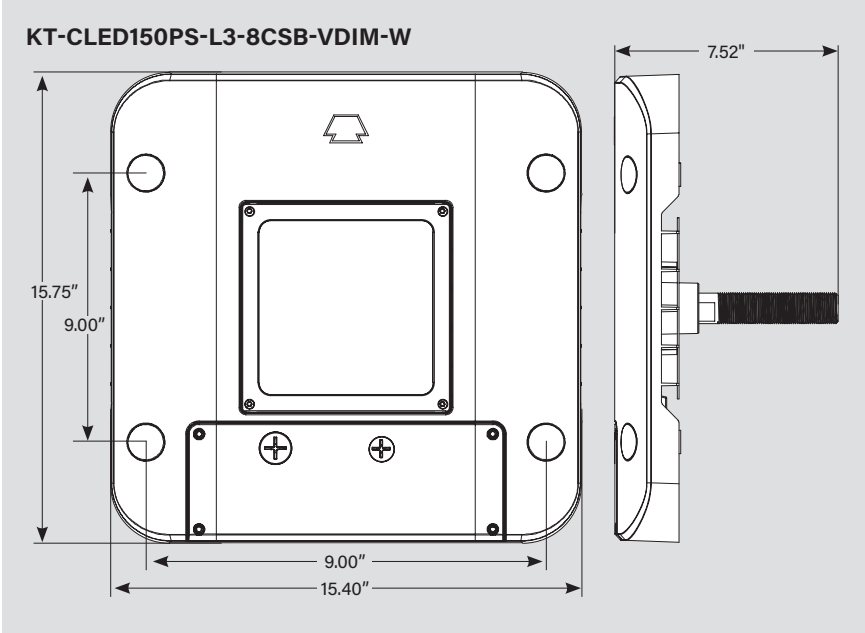
Note: Color uniformity: CCT (Correlated Color Temperature) range as per guidelines outlined in ANSI C78.377-2017

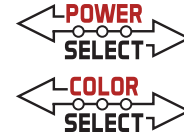


# KT-CLED150PS-L3-8CSB-VDIM-W

## GAS STATION CANOPY

### PHYSICAL SPECIFICATIONS



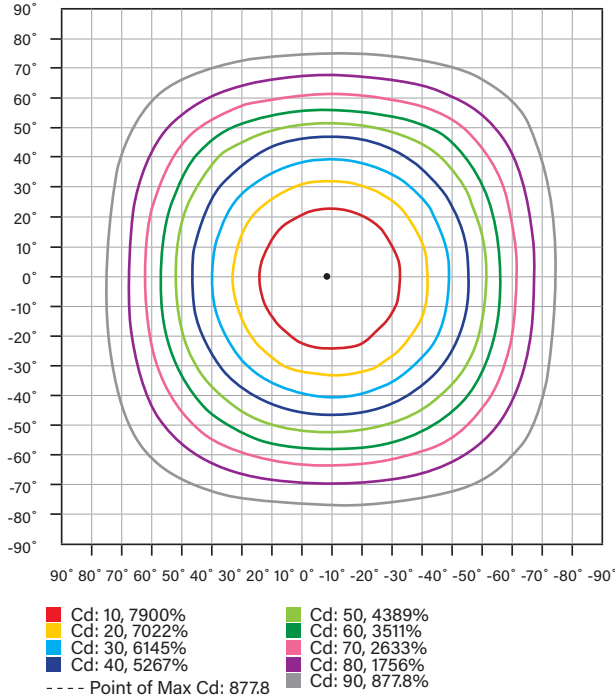


# KT-CLED150PS-L3-8CSB-VDIM-W

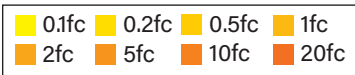
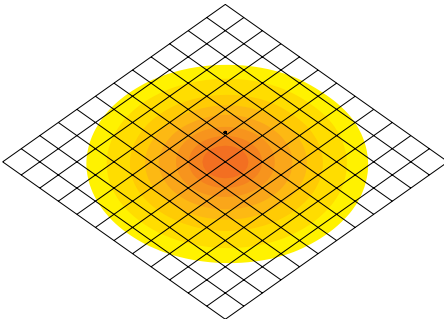
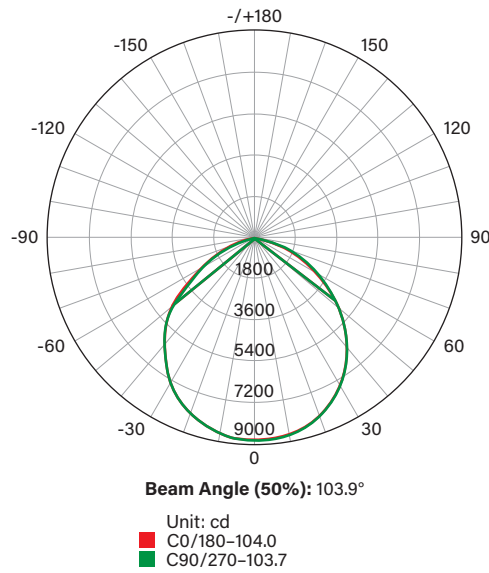
## GAS STATION CANOPY

### PHOTOMETRIC SPECIFICATIONS

**ISOCANDELA PLOT**

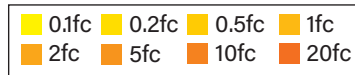
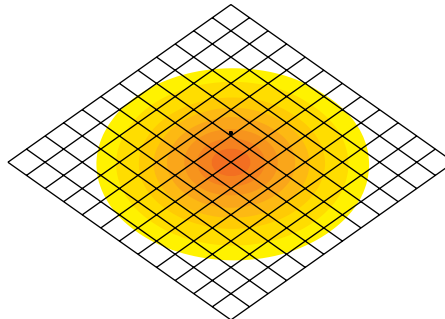


**POLAR CANDELA DISTRIBUTION**



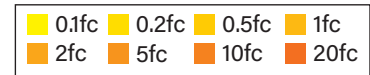
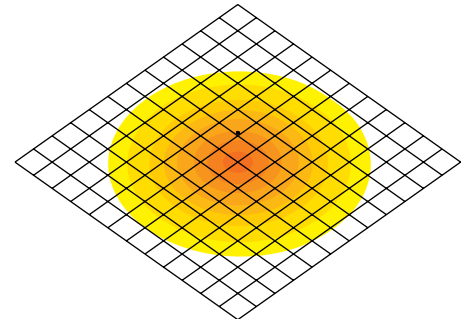
**PHOTOMETRICS**

- Canopy set at 150W mounted at 16 ft
- Grid dimensions 10 x 10 sq ft
- Photometric layout for general reference only



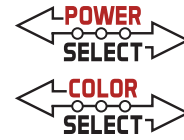
**PHOTOMETRICS**

- Canopy set at 125W mounted at 16 ft
- Grid dimensions 10 x 10 sq ft
- Photometric layout for general reference only



**PHOTOMETRICS**

- Canopy set at 100W mounted at 16 ft
- Grid dimensions 10 x 10 sq ft
- Photometric layout for general reference only



# KT-CLED150PS-L3-8CSB-VDIM-W GAS STATION CANOPY

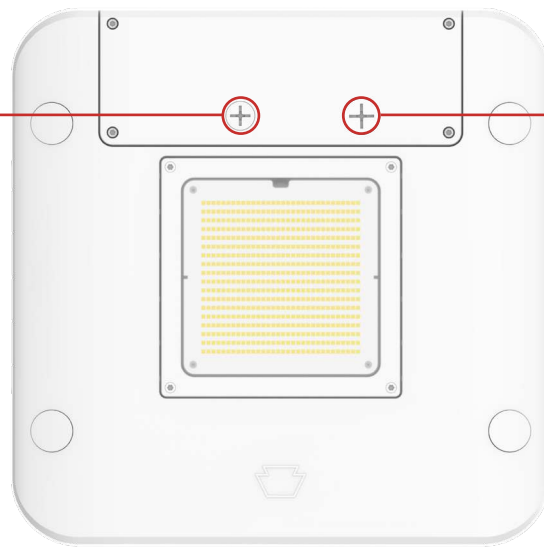
## POWER SELECT (WATTAGE) AND COLOR SELECT (CCT) ADJUSTMENT

This fixture is equipped with field-adjustable selectable wattage and selectable CCT

1. Ensure power is off to the fixture.
2. Remove knockout.
3. Adjust dip switch to desired settings.
4. Replace knockout.
5. Restore power to fixture.



**SMARTLOOP CONTROLS**  
See accessories listed below.



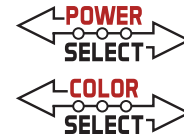
KT-CLED150PS-L3-8CSB-VDIM-W



**COLOR SELECT ADJUSTMENT SWITCH**  
Set dip switch to adjust CCT between 3000K, 4000K, and 5000K. Fixture preset at 5000K.



**POWER SELECT ADJUSTMENT SWITCH**  
Set dip switch to adjust between wattages. Fixture preset at 150W.



# KT-CLED150PS-L3-8CSB-VDIM-W

## GAS STATION CANOPY

### SENSORS

**Factory-Installable OR Field-Installable** (field-installable purchased separately)

✓	SUFFIX*	CATALOG NUMBER	DESCRIPTION	UPC	EASY CODE
	/MW3	KTS-MW3-12V-PKO	12V Microwave Occupancy Sensor	843654130637	TRM-32
	/FC3**	KTSL-FC3-12V-PKO-PIR	Bluetooth mesh wireless screw-in LED controller for SmartLoop system Integrated daylight sensor   PIR motion sensor	843654138862	OCW-60
	/FC4	KTSL-FC4-12V-PKO	Bluetooth mesh wireless screw-in low voltage fixture controller for SmartLoop system	843654149066	RUN-10



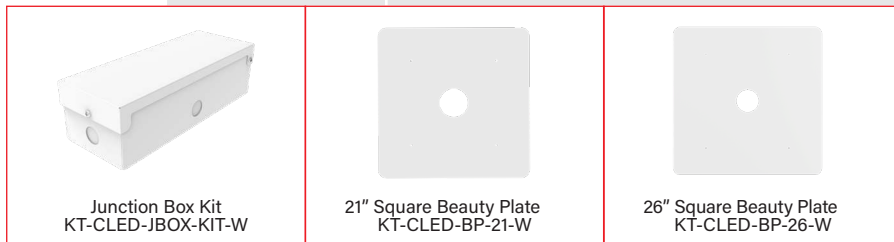
\* For factory installation of accessory, add suffix to fixture part number (see ordering examples and instructions on last page of spec sheet).

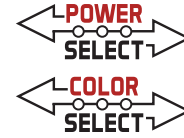
\*\* When installing on Keystone area lights, use small thin gasket provided with the sensor to ensure proper electrical connection and a water-tight seal. Hand tighten only. (Do NOT use the larger thick gasket. Sensor will not make electrical contact with thick gasket.) PIR sensors may not always perform reliably in typical outdoor environments. Ensure sensors are used and commissioned with this in mind. Consult Keystone for further information on the matter. When using KTSL-FC3-12V-PKO-PIR in applications with photosensor control for dusk to dawn, use 3-pin twist-lock photocells (KT-TLP-UV-3P) for optimal functionality.

### MOUNTS AND BRACKETS

**Field-Installable** (field-installable purchased separately)

CATALOG NUMBER	DESCRIPTION	UPC	EASY CODE
KT-CLED-JBOX-KIT-W	Junction Box Kit   White	843654172453	XTV-84
KT-CLED-BP-21-W	21" Square Beauty Plate   White	843654172460	XBR-27
KT-CLED-BP-26-W	26" Square Beauty Plate   White	843654172477	PNY-01





# KT-CLED150PS-L3-8CSB-VDIM-W

## GAS STATION CANOPY

**ORDERING INFORMATION**

ORDER CODE	UPC	Easy Code	DLC PRODUCT CODE
KT-CLED150PS-L3-8CSB-VDIM-W	843654172439	DNE-05	S-H98YJN

**CATALOG NUMBER BREAKDOWN**

# KT-CLED150PS-L3-8CSB-VDIM-W

<b>1</b>	Keystone Technologies	<b>7</b>	Series Designation	<b>10</b>	Color Select Designation
<b>2</b>	Canopy Light Fixture	<b>8</b>	80 CRI	<b>B</b>	3000/4000/5000K
<b>3</b>	LED Technology	<b>9</b>	Color Select	<b>12</b>	Housing Color
<b>4</b>	Wattage	<b>10</b>	Color Select Designation	<b>W</b>	White
<b>5</b>	Power Select	<b>11</b>	0-10V Dimming		
<b>6</b>	Size	<b>12</b>	Housing Color		

**ORDERING EXAMPLES**

FIXTURE WITH SINGLE FACTORY-INSTALLED ACCESSORY

**KT-CLED150PS-L3-8CSB-VDIM-W /FC3**

FIXTURE WITH NO FACTORY-INSTALLED ACCESSORIES

**KT-CLED150PS-L3-8CSB-VDIM-W**

KEYSTONE FIXTURE	
CATALOG NUMBER	
KT-CLED150PS-L3-8CSB-VDIM-W	

SENSORS		
✓	SUFFIX	CATALOG NUMBER
✓	/FC3	KTSL-FC3-12V-PKO-PIR

\* When ordering more than one factory-installed accessory, use multiple suffixes as shown in the ordering examples above.  
 Note: All accessories can also be ordered separately for field installation using just their regular Catalog Number, UPC, or Easy Code.