



# LED DISK LIGHT

► **DESIGN** - LED DISK LIGHT with a classic, low-profile design is an ideal solution for low ceilings. The acrylic lens with a 105° beam angle and CRI90+ grants you even light distribution. With 2.5kV surge protection, it is designed to operate on 120V circuits.

► **COLOR SELECTABLE** - You can choose either a 2,700K soft white, 3,000K warm white, 3,500K neutral white, 4,000K cool white, or 5,000K daylight color temperature.

► **DIMMING** - Smooth triac dimming capabilities ranging from 10% to 100% with modern LED dimmers allow you to control the look and feel of your space.

► **INSTALLATION** - The fixture can be installed on either an existing outlet box or a remodeled can by using a retrofit kit with universal TP24 or E26 connectors. 2.75", 3.5" and 4" mounting holes expand your installation options. It is also Wet Locations rated.

► **ADVANTAGES** - With a lifespan of 50,000 hours, these fixtures are made to last decades under normal operation! ASD provides a 5-year limited warranty along with UL and Energy Star certifications to guarantee top quality products and safety!

Catalog number	
Notes	
Type	



NEC 410.16 compliance



Finish: White Nickel Bronze Black

Model	Size	Watts	Voltage	Dimmable	Lumens	CCT	Finish	Dimensions (LxH)
ASD-LDS-4D10AC-WH-6PACK	4 inch	10W	120 V	TRIAC	650/674/685/660/656 lm	5CCT (2,700/3,000/3,500/4,000/5,000 K)	White	5-7/8" x 7/8"
ASD-LDS-4D10AC-NK-6PACK	4 inch	10W	120 V	TRIAC	650/674/685/660/656 lm	5CCT (2,700/3,000/3,500/4,000/5,000 K)	Brushed nickel	5-7/8" x 7/8"
ASD-LDS-4D10AC-BZ-6PACK	4 inch	10W	120 V	TRIAC	650/674/685/660/656 lm	5CCT (2,700/3,000/3,500/4,000/5,000 K)	Bronze	5-7/8" x 7/8"
ASD-LDS-4D10AC-BK-6PACK	4 inch	10W	120 V	TRIAC	650/674/685/660/656 lm	5CCT (2,700/3,000/3,500/4,000/5,000 K)	Black	5-7/8" x 7/8"
ASD-LDS-6D15AC-WH-6PACK	6 inch	15W	120 V	TRIAC	1,100/1,207/1,245/1,218/1,153 lm	5CCT (2,700/3,000/3,500/4,000/5,000 K)	White	7-5/16" x 15/16"
ASD-LDS-6D15AC-WH-12PACK	6 inch	15W	120 V	TRIAC	1,100/1,207/1,245/1,218/1,153 lm	5CCT (2,700/3,000/3,500/4,000/5,000 K)	White	7-5/16" x 15/16"
ASD-LDS-6D15AC-NK-6PACK	6 inch	15W	120 V	TRIAC	1,100/1,207/1,245/1,218/1,153 lm	5CCT (2,700/3,000/3,500/4,000/5,000 K)	Brushed nickel	7-5/16" x 15/16"
ASD-LDS-6D15AC-BZ-6PACK	6 inch	15W	120 V	TRIAC	1,100/1,207/1,245/1,218/1,153 lm	5CCT (2,700/3,000/3,500/4,000/5,000 K)	Bronze	7-5/16" x 15/16"
ASD-LDS-6D15AC-BK-6PACK	6 inch	15W	120 V	TRIAC	1,100/1,207/1,245/1,218/1,153 lm	5CCT (2,700/3,000/3,500/4,000/5,000 K)	Black	7-5/16" x 15/16"

## PRODUCT SPECIFICATIONS:

Construction & Materials				
Housing	Iron			
Diffuser	Acrylic			
Finish	White, Brushed nickel, Bronze, Black			
Weight	ASD-LDS-4D10AC-WH-6PACK	2.8 lbs (1.3 kg)	ASD-LDS-6D15AC-WH-6PACK	3.5 lbs (1.6 kg)
	ASD-LDS-4D10AC-NK-6PACK		ASD-LDS-6D15AC-WH-12PACK	7.9 lbs (3.6 kg)
	ASD-LDS-4D10AC-BZ-6PACK		ASD-LDS-6D15AC-NK-6PACK	3.5 lbs (1.6 kg)
	ASD-LDS-4D10AC-BK-6PACK		ASD-LDS-6D15AC-BZ-6PACK	
			ASD-LDS-6D15AC-BK-6PACK	
Environmental system				
Work environment	Suitable for Wet Locations			
Operating temperature	-4°F to 104°F (-20°C to 40°C)			
L-70 Life	> 50,000 hrs			

For most up-to-date spec sheets please refer to [asd-lighting.com](http://asd-lighting.com)

ASD LIGHTING CORP

E-mail: [orders@asd-lighting.com](mailto:orders@asd-lighting.com) | Web site: [www.asd-lighting.com](http://www.asd-lighting.com)








# LED DISK LIGHT

Optical system				
Luminous flux	ASD-LDS-4D10AC-WH-6PACK	650/674/685/660/656 lm	ASD-LDS-6D15AC-WH-6PACK	1,100/1,207/1,245/1,218/1,153 lm
	ASD-LDS-4D10AC-NK-6PACK		ASD-LDS-6D15AC-WH-12PACK	
	ASD-LDS-4D10AC-BZ-6PACK		ASD-LDS-6D15AC-NK-6PACK	
	ASD-LDS-4D10AC-BK-6PACK		ASD-LDS-6D15AC-BZ-6PACK	
			ASD-LDS-6D15AC-BK-6PACK	
Color temperature	5CCT switch (2,700/3,000/3,500/4,000/5,000 K), 3,000 K by default			
CRI	> 90			
Electrical system				
Input voltage	120 V			
Max input current	ASD-LDS-4D10AC-WH-6PACK	0.1 A	ASD-LDS-6D15AC-WH-6PACK	0.13 A
	ASD-LDS-4D10AC-NK-6PACK		ASD-LDS-6D15AC-WH-12PACK	
	ASD-LDS-4D10AC-BZ-6PACK		ASD-LDS-6D15AC-NK-6PACK	
	ASD-LDS-4D10AC-BK-6PACK		ASD-LDS-6D15AC-BZ-6PACK	
		ASD-LDS-6D15AC-BK-6PACK		
Inrush current (Action time)	ASD-LDS-4D10AC-WH-6PACK	40 A (0.02 S)	ASD-LDS-6D15AC-WH-6PACK	42 A (0.01 S)
	ASD-LDS-4D10AC-NK-6PACK		ASD-LDS-6D15AC-WH-12PACK	
	ASD-LDS-4D10AC-BZ-6PACK		ASD-LDS-6D15AC-NK-6PACK	
	ASD-LDS-4D10AC-BK-6PACK		ASD-LDS-6D15AC-BZ-6PACK	
		ASD-LDS-6D15AC-BK-6PACK		
Off state power	0W			
Power consumption	ASD-LDS-4D10AC-WH-6PACK	10W	ASD-LDS-6D15AC-WH-6PACK	15W
	ASD-LDS-4D10AC-NK-6PACK		ASD-LDS-6D15AC-WH-12PACK	
	ASD-LDS-4D10AC-BZ-6PACK		ASD-LDS-6D15AC-NK-6PACK	
	ASD-LDS-4D10AC-BK-6PACK		ASD-LDS-6D15AC-BZ-6PACK	
		ASD-LDS-6D15AC-BK-6PACK		
Power factor	> 0.9			
Output voltage	ASD-LDS-4D10AC-WH-6PACK	126 V	ASD-LDS-6D15AC-WH-6PACK	132 V
	ASD-LDS-4D10AC-NK-6PACK		ASD-LDS-6D15AC-WH-12PACK	
	ASD-LDS-4D10AC-BZ-6PACK		ASD-LDS-6D15AC-NK-6PACK	
	ASD-LDS-4D10AC-BK-6PACK		ASD-LDS-6D15AC-BZ-6PACK	
		ASD-LDS-6D15AC-BK-6PACK		
Max output current	ASD-LDS-4D10AC-WH-6PACK	0.65 A	ASD-LDS-6D15AC-WH-6PACK	0.1 A
	ASD-LDS-4D10AC-NK-6PACK		ASD-LDS-6D15AC-WH-12PACK	
	ASD-LDS-4D10AC-BZ-6PACK		ASD-LDS-6D15AC-NK-6PACK	
	ASD-LDS-4D10AC-BK-6PACK		ASD-LDS-6D15AC-BZ-6PACK	
		ASD-LDS-6D15AC-BK-6PACK		
Surge protection DM/CM	2.5 kV / 2.5 kV			
Dimming range				
10- 100%				
Dimming compatible controls				
Brand	Lutron		Leviton	
Models	DVWCL-153PH-LA	CTCL-150H-WH	S-600PR-WH	6633-P
	DVW-603PGH-WH	CT-600PR-WH	DV-600P	IPL06
	CTCL-153PR-WH	CT-103PR-WH	NT-1000	6674
	CT-603PGH-WH	SLV-600P-WH	S-603P	6672
	DVCL-153P-WH	DVLV-603P-IV	S-600P	
Regular and voluntary certifications				
5-year limited warranty				
UL certified E473804				
Energy Star listed				
Title 24 JA8-2022 compliant				

## ACCESSORIES (sold separately):

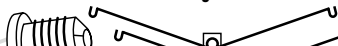
### Retrofit kit with E26 base and TP24 connector for LED Disk light 4"

ASD-RK4-LDS ASD-RK4-LDS-6PACK



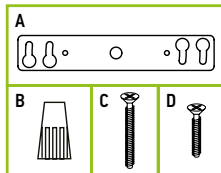
### Retrofit kit with E26 base and TP24 connector for LED Disk light 6"

ASD-RK6-LDS ASD-RK6-LDS-6PACK



## PACKAGE CONTENTS:

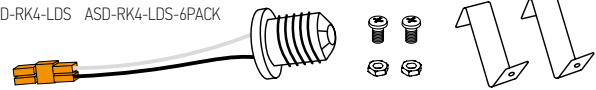
Description	Q-ty
LED Disk Light	6 (12 for 12 pack)
Crossbar (A) only for models 4"	1
Wire nut (B)	3
1-1/2" screw (C)	2
1/2" screw (D)	2
Box	1



## ACCESSORIES (sold separately):

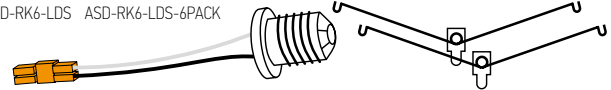
### Retrofit kit with E26 base and TP24 connector for LED Disk light 4"

ASD-RK4-LDS ASD-RK4-LDS-6PACK



### Retrofit kit with E26 base and TP24 connector for LED Disk light 6"

ASD-RK6-LDS ASD-RK6-LDS-6PACK



## ACCESSORY COMPATIBILITY LIST:

Models	Accessories	Retrofit kit with E26 base and TP24 connector for LED Disk Light 4"	Retrofit kit with E26 base and TP24 connector for LED Disk Light 6"
		ASD-RK4-LDS ASD-RK4-LDS-6PACK	ASD-RK6-LDS ASD-RK6-LDS-6PACK
ASD-LDS	4"	•	
	6"		•

For most up-to-date spec sheets please refer to [asd-lighting.com](http://asd-lighting.com)

ASD LIGHTING CORP

E-mail: [orders@asd-lighting.com](mailto:orders@asd-lighting.com) | Web site: [www.asd-lighting.com](http://www.asd-lighting.com)





# LED DISK LIGHT

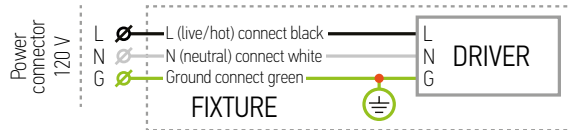
## INSTALLATION GUIDE

### IMPORTANT SAFETY INFORMATION:

Please read all the instructions below before installation.

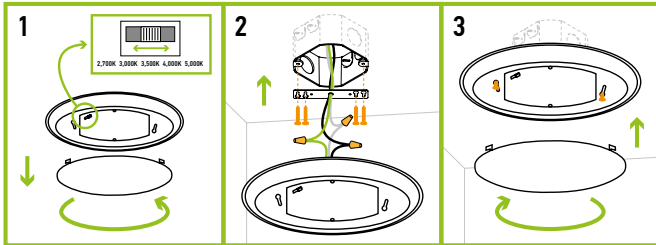
- ▶ Make sure that the supply voltage corresponds to the rated product voltage.
- ▶ The product must be installed by a qualified electrician in accordance with the National Electrical Code and corresponding local codes.
- ▶ If the product is damaged, do not use it.

### ELECTRICAL SCHEMATIC DIAGRAM:



### JUNCTION BOX INSTALLATION 4":

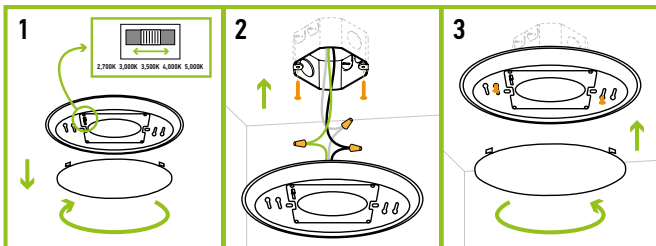
1. Remove the lens by turning it counter clockwise. Choose preferred color temperature by adjusting the switch position.
2. This fixture fits most outlet boxes with 2.75", 3.5" or 4" holes. Attach the crossbar to the outlet box using two screws. Insert another two screws into the crossbar. Connect the wires: Black to Black, White to White, Green to Green. Secure the connection with wire nuts. Tuck all the wires into the outlet box.
3. Attach the fixture to the crossbar by feeding screws through the keyhole slots and then tighten the screws in the narrow end of the keyhole slots. Do not over tighten. Place the Lens back and turn it clockwise to secure.



\* Please ensure that when installed in closets, ASD-LDS-AC has a minimum of 12 inches of clearance from the defined storage area.

### JUNCTION BOX INSTALLATION 6":

1. Remove the lens by turning it clockwise. Choose preferred color temperature by adjusting the switch position.
2. This fixture fits most outlet boxes with 2.75", 3.5" or 4" holes. Insert two screws into the outlet box. Connect the wires: Black to Black, White to White, Green to Green. Secure the connection with wire nuts. Tuck all the wires into the outlet box.
3. Attach the fixture to the outlet box by feeding screws through the keyhole slots and then tighten the screws in the narrow end of the keyhole slots. Do not over tighten. Place the Lens back and turn it counter clockwise to secure.



\* Please ensure that when installed in closets, ASD-LDS-AC has a minimum of 12 inches of clearance from the defined storage area.

### ⚠ WARNING

**RISK OF PERSONAL INJURY – READ and follow all WARNINGS and installation instructions.** Keep or give to the owner for future reference.

**Risk of cuts:** Wear gloves to prevent cuts or abrasions when removing from carton, handling, installing, and maintaining this product.

**Risk of electric shock:** This product must be installed in accordance with the applicable installation code by a person familiar with the construction and operation of the product and the hazards involved.

**Risk of Fire:** Minimum 194°F supply conductors. Consult a qualified electrician to ensure correct branch circuit conductor.

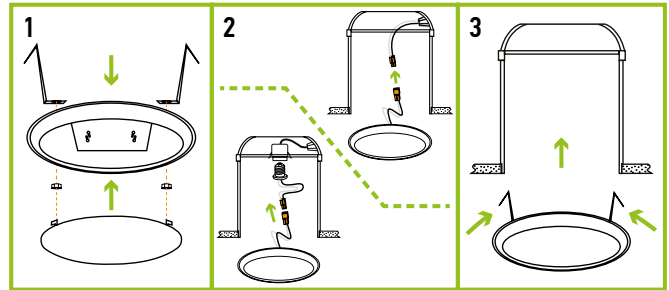
ASD® assumes no responsibility for claims arising out of improper or careless installation or handling of this product.

### RECESSED CAN INSTALLATION 4"

ASD-RK4-LDS

sold separately:

1. Remove the existing fixture. Remove the lens by turning it counter clockwise. Attach remodeled clips. Secure with screws and nut. Place the lens back and turn it clockwise.
2. Link TP24 connector with the fixture wires. Connect the E26 Adapter and thread it into the socket of the recessed can or connect it with TP24 of the recessed can directly.
3. Carefully route wires, and push fixture up to ceiling surface.



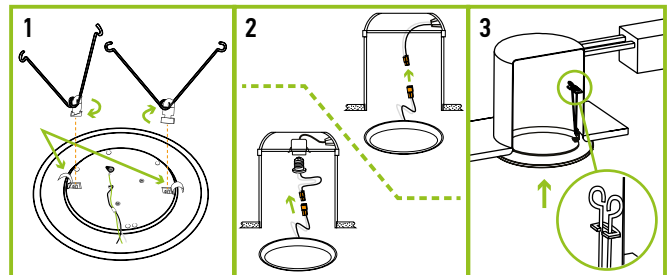
\* Please ensure that when installed in closets, ASD-LDS-AC has a minimum of 6 inches of clearance from the defined storage area.

### RECESSED CAN INSTALLATION 6"

ASD-RK6-LDS

sold separately:

1. Place the spring clip arms into the rectangular slots and twist them in a locked position. The spring clips must be adjusted depending on the Can size.
2. Link TP24 connector with the fixture wires. Connect the E26 Adapter and thread it into the socket of the recessed can or connect it with TP24 of the recessed can directly.
3. Squeeze the two sets of spring clip arms up towards each other. Carefully route wires into the can, and hook both sets of spring clip arms into the arm hooks on the inside wall of the can. Release spring clip arms and gently push the Disk Light up into the can until flush against the ceiling surface.



\* Please ensure that when installed in closets, ASD-LDS-AC has a minimum of 6 inches of clearance from the defined storage area.

For most up-to-date spec sheets please refer to [asd-lighting.com](http://asd-lighting.com)

ASD LIGHTING CORP

E-mail: [orders@asd-lighting.com](mailto:orders@asd-lighting.com) | Web site: [www.asd-lighting.com](http://www.asd-lighting.com)





# LED DISK LIGHT

## ORDERING INFORMATION

Model	UPC	Pcs. per carton	Carton size	Carton weight	GTIN 14
ASD-LDS-4D10AC-WH-6PACK	810050738545	2	13.4" x 6.9" x 7.5"	6.8 lbs	10810050738542
ASD-LDS-4D10AC-NK-6PACK	810050738569	2	13.4" x 6.9" x 7.5"	6.8 lbs	10810050738566
ASD-LDS-4D10AC-BZ-6PACK	819201023271	2	13.4" x 6.9" x 7.5"	6.8 lbs	10819201023278
ASD-LDS-4D10AC-BK-6PACK	810050738552	2	13.4" x 6.9" x 7.5"	6.8 lbs	10810050738559
ASD-LDS-6D15AC-WH-6PACK	810050738354	2	16.3" x 8.9" x 6.9"	9.2 lbs	20810050738358
ASD-LDS-6D15AC-WH-12PACK	810050738880	1	15.4" x 5.9" x 8.1"	7.9 lbs	-
ASD-LDS-6D15AC-NK-6PACK	810050738378	2	16.3" x 8.9" x 6.9"	9.2 lbs	20810050738372
ASD-LDS-6D15AC-BZ-6PACK	819201023288	2	16.3" x 8.9" x 6.9"	9.2 lbs	10819201023285
ASD-LDS-6D15AC-BK-6PACK	810050738361	2	16.3" x 8.9" x 6.9"	9.2 lbs	20810050738365

## ACCESSORIES:

Model	Description	Weight	UPC					
ASD-RK4-LDS	Retrofit kit with E26 base and TP24 connector for LED Disk Light 4"	0.1 lbs	810050730105					
ASD-RK4-LDS-6PACK	Retrofit kit with E26 base and TP24 connector for LED Disk Light 4" 6 pack	0.5 lbs	810050739375					
ASD-RK6-LDS	Retrofit kit with E26 base and TP24 connector for LED Disk Light 6"	0.1 lbs	810050730112					
ASD-RK6-LDS-6PACK	Retrofit kit with E26 base and TP24 connector for LED Disk Light 6" 6 pack	0.5 lbs	810050738897					
Model	Pcs. in middle box	Middle box size	Middle box weight	GTIN 14 middle box	Pcs. per carton	Carton size	Carton weight	GTIN 14 in carton
ASD-RK4-LDS	12	5.2" x 4.3" x 5.2"	1.1 lbs	10810050730102	72	11.4" x 11.2" x 6.1"	7.3 lbs	20810050730109
ASD-RK4-LDS-6PACK	-	-	-	-	8	12.2" x 10.4" x 5.5"	4.6 lbs	10810050739372
ASD-RK6-LDS	12	7.5" x 3.5" x 7.5"	1.2 lbs	10810050730119	48	14.6" x 8.1" x 8.1"	5.5 lbs	20810050730116
ASD-RK6-LDS-6PACK	-	-	-	-	8	15.6" x 8.7" x 8.1"	6 lbs	10810050738894

For most up-to-date spec sheets please refer to [asd-lighting.com](http://asd-lighting.com)

ASD LIGHTING CORP

E-mail: [orders@asd-lighting.com](mailto:orders@asd-lighting.com) | Web site: [www.asd-lighting.com](http://www.asd-lighting.com)

